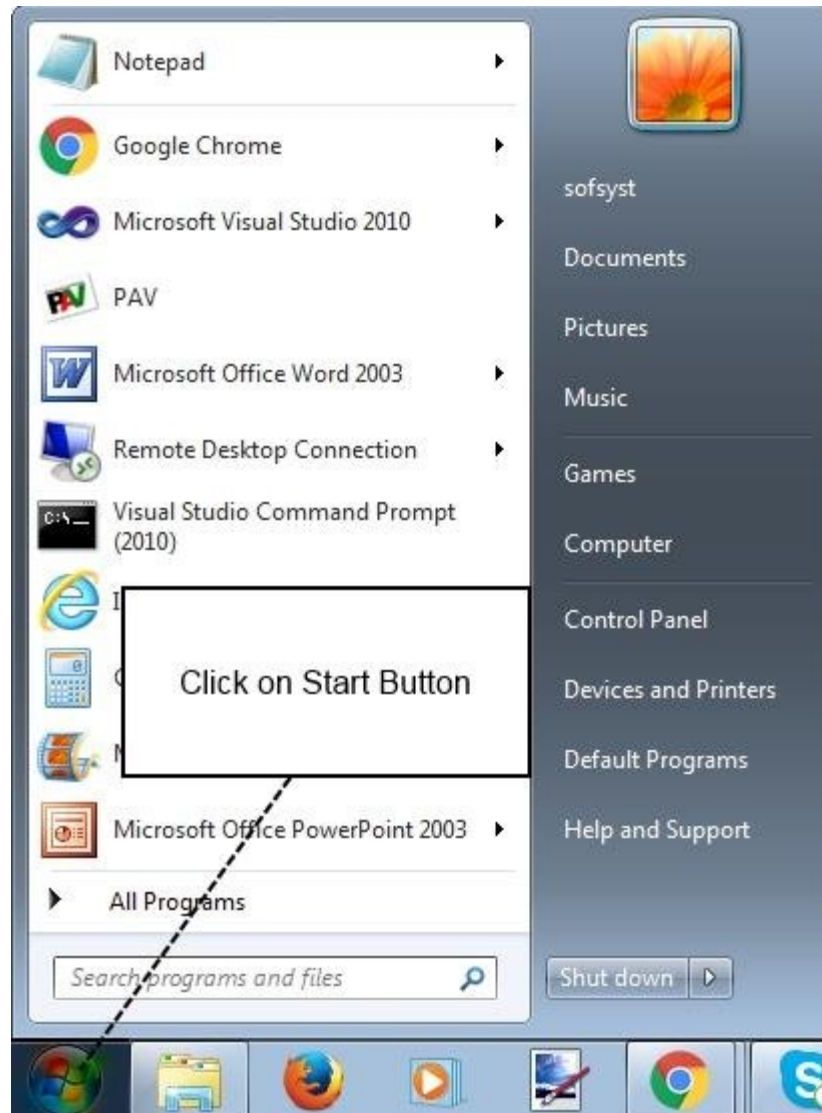


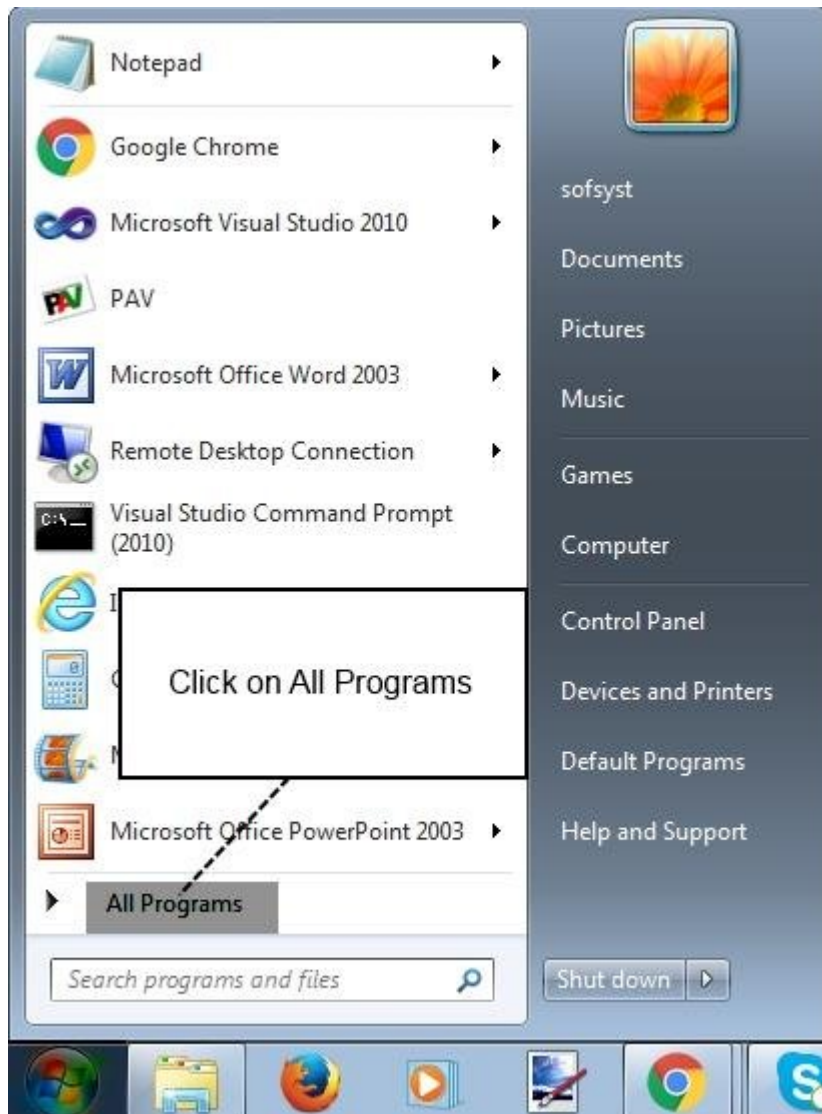


Printing Auto Verification (Recommended Scanner Settings)

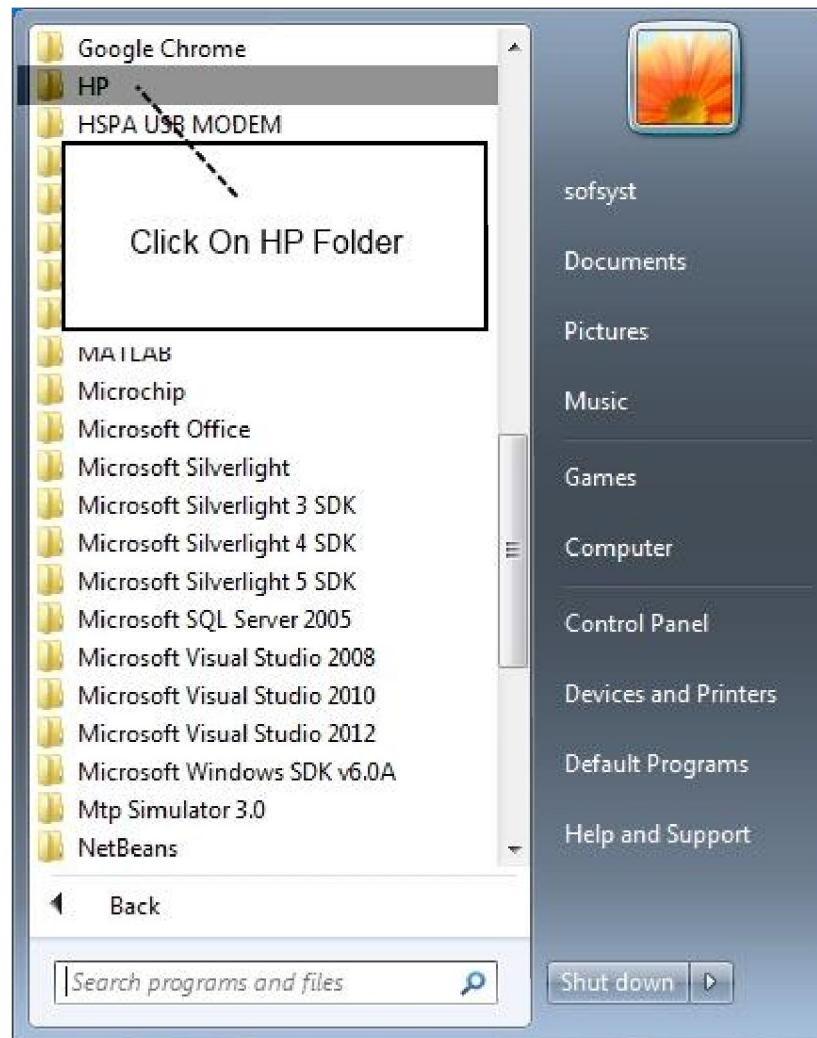
- Click on Start Button of Windows



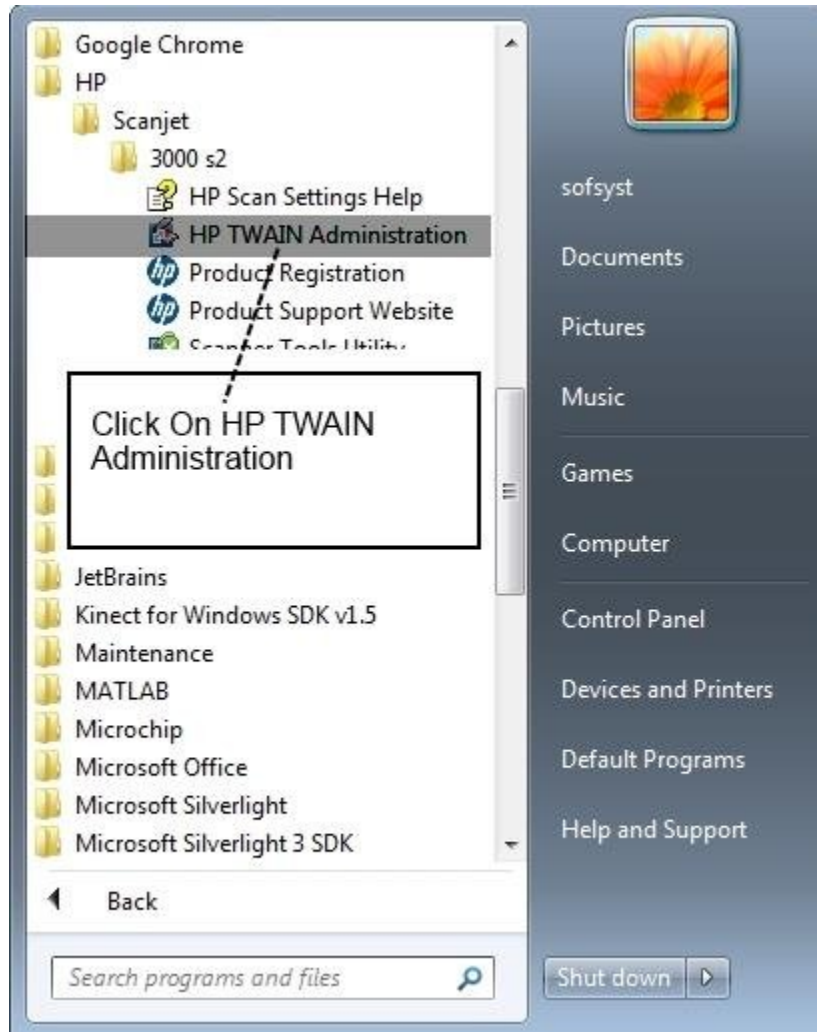
- Click on All Programs



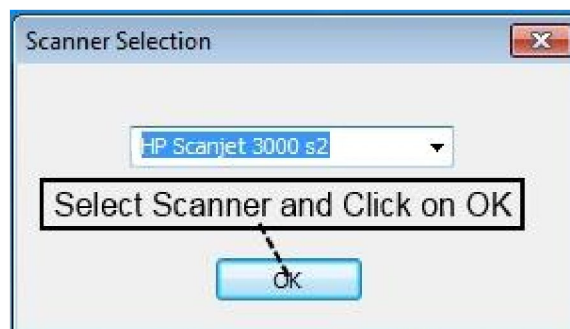
- Click on HP Folder



- Click on HP TWAIN Administration

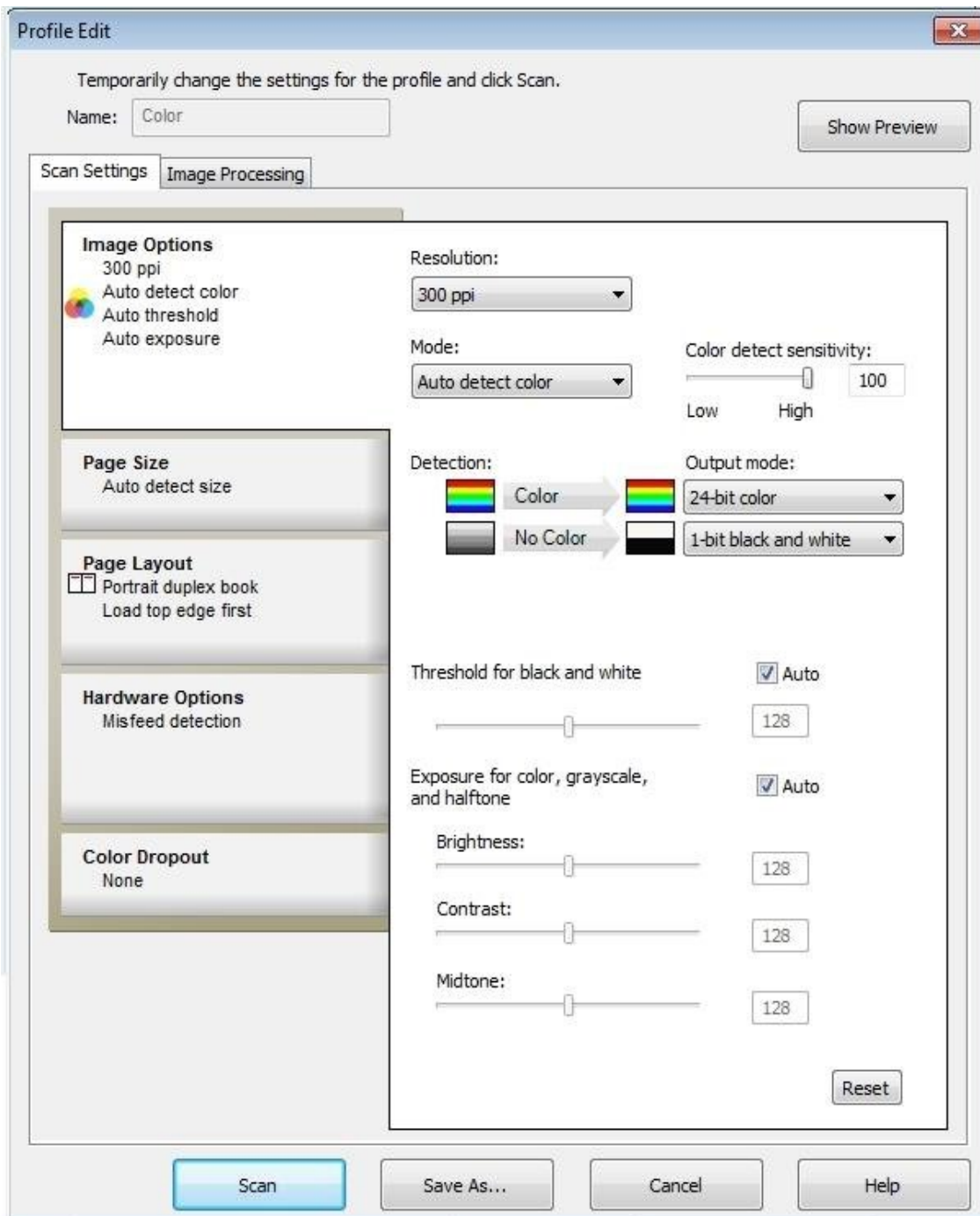


- Select HP Scanner



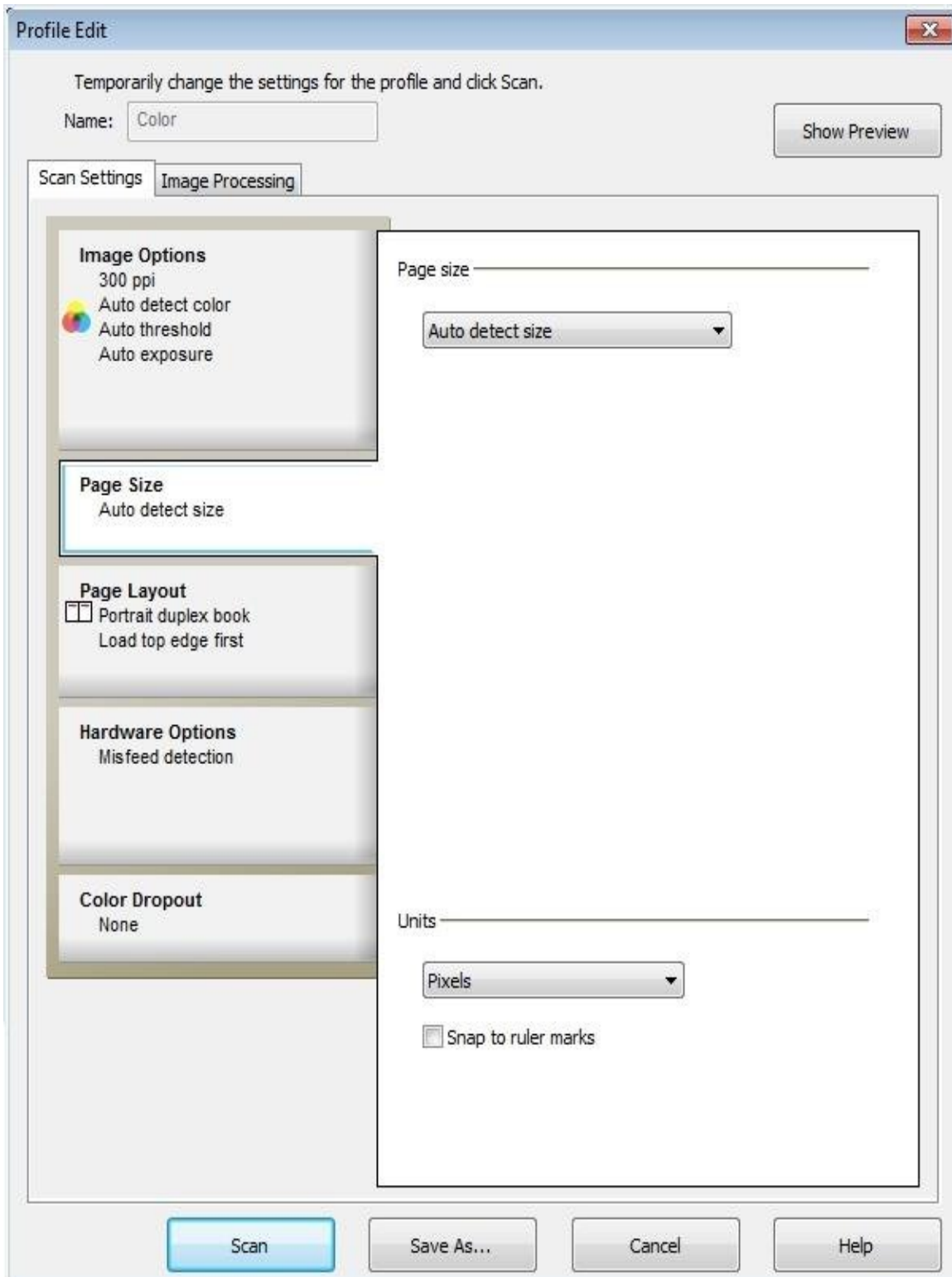
1. Scanner Setting Image Option

- **Set Resolution to 300 ppi**
- **Mode : Auto Detect Color**
- **Color Detection sensitivity : 100**
- **Output Mode : Color 24 Bit color , No Color 1 Bit Black and White**
- **Threshold for Black and White : Tick on Auto Check Box**
- **Exploser for Color, grayscale, halftone : Tick on Auto Check Box**



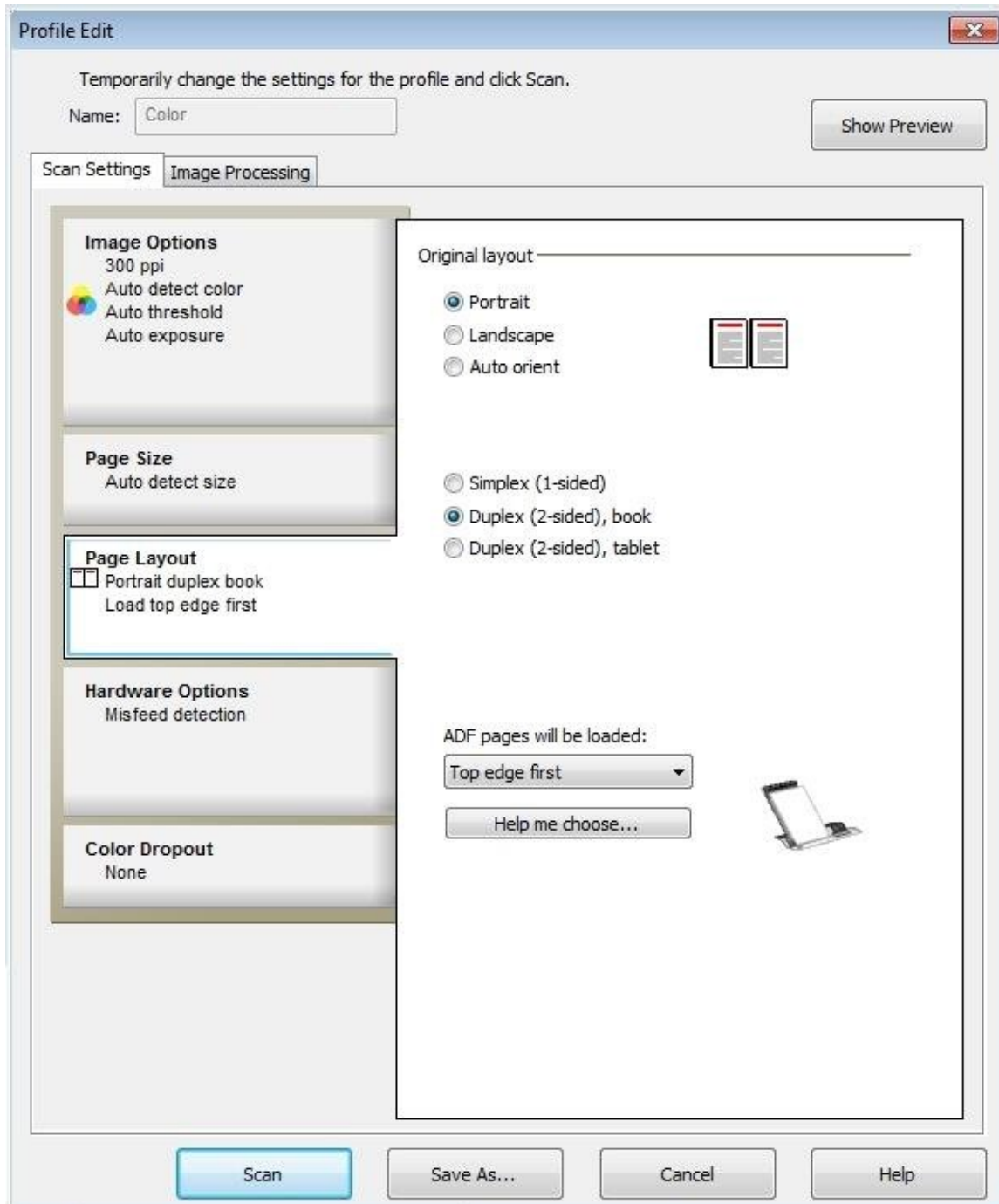
2. Scanner Setting Page Size

- **Page Size** : Select Auto Detect Size
- **Unit** : Pixels
- **Uncheck** Snap to Ruler Mark



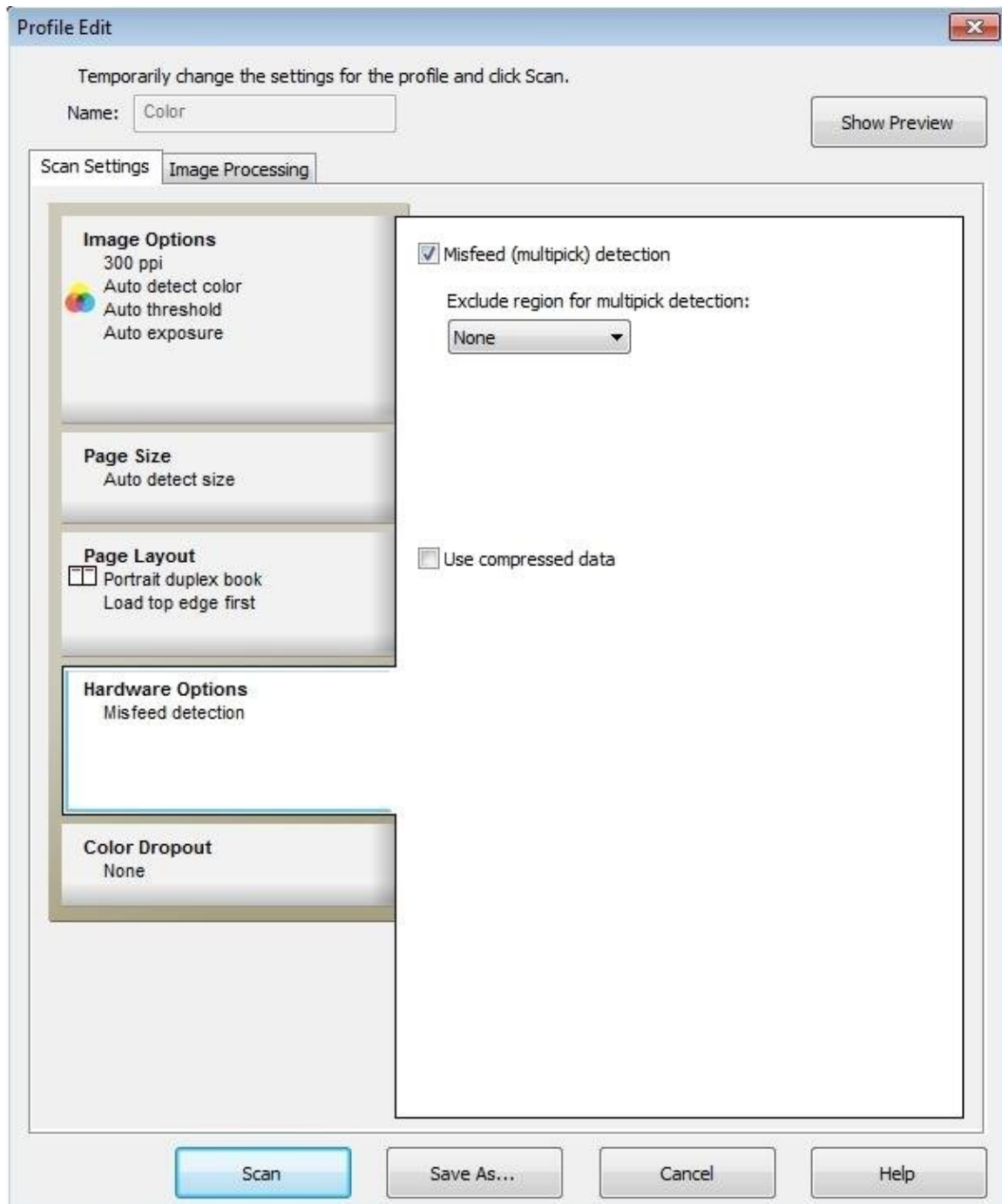
3. Scanner Setting Page Layout

- **Original Layout** : Portrait
- **Scan Type** : Duplex Two sided Book
- **ADF Page Will be loaded** : Top Edge First



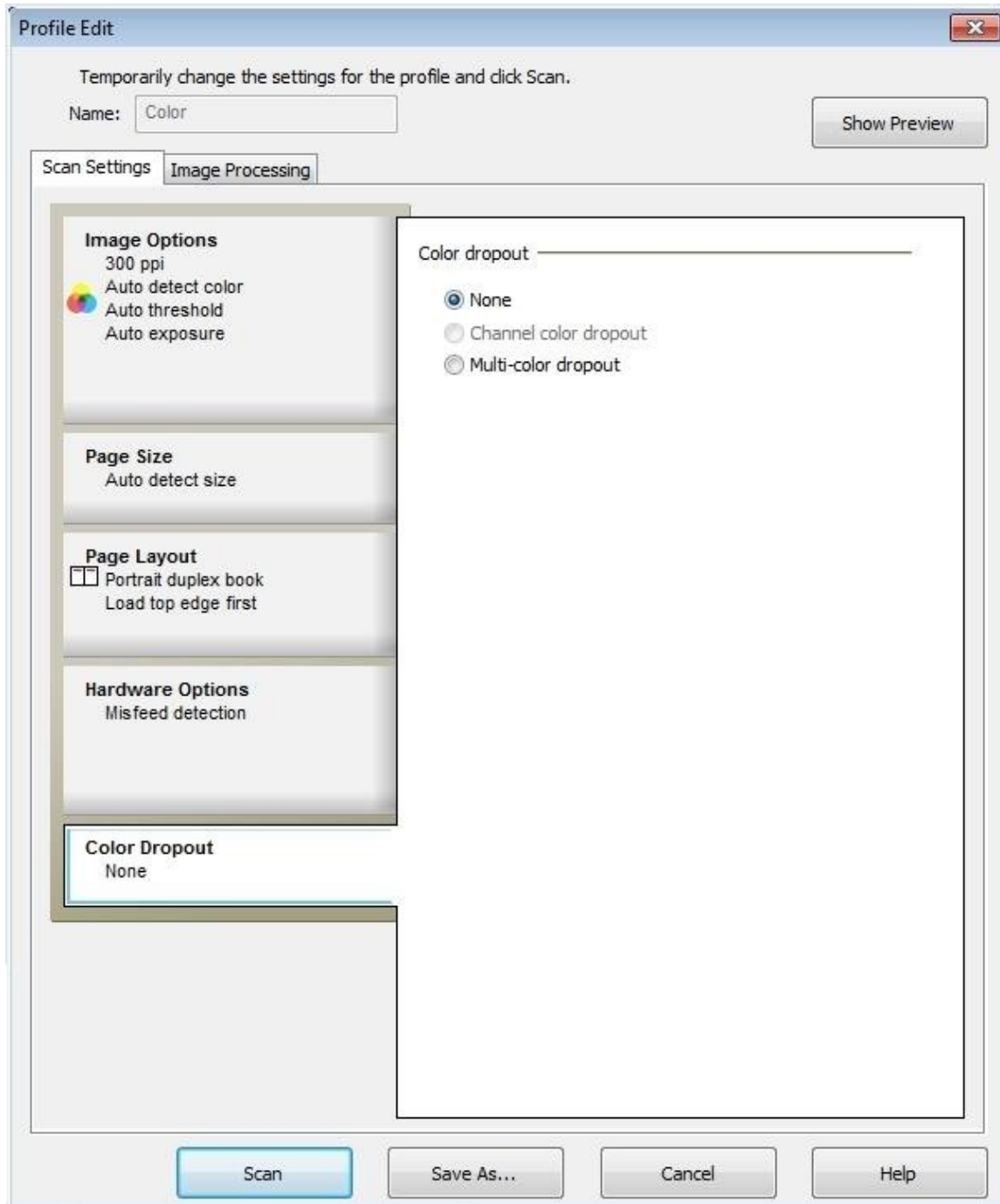
4. Scanner Setting Hardware Options

- **Misfeed/Multipick Detection** Checked
- **Exclude region for multipick Detection** : Set to None
- **Uncompressed data** : Unchecked



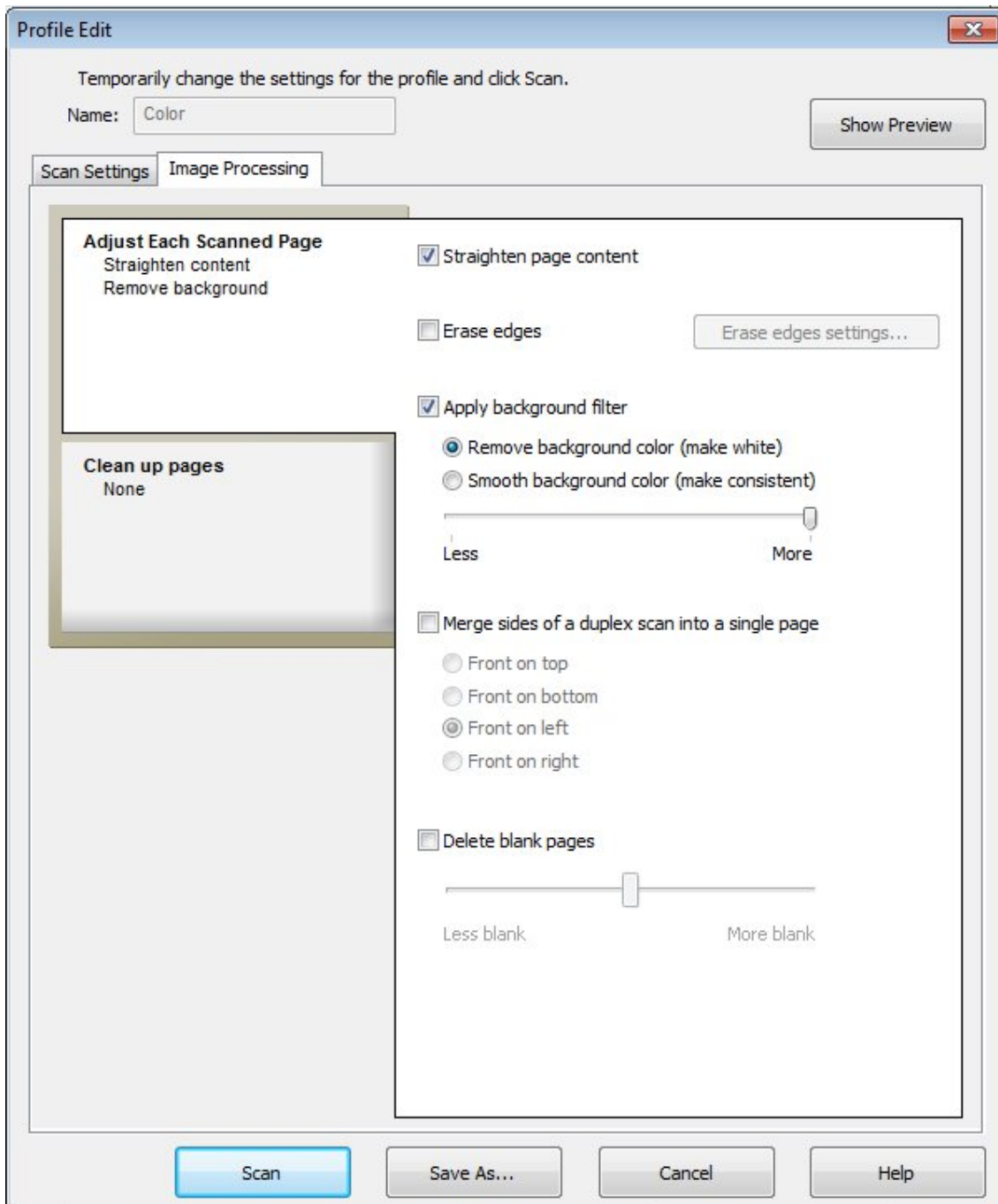
5. Scanner Setting - Color Dropout

- **Color Dropout** : Set to None



6. Image Processing : - Adjust Each Scan Page

- **Straighten page content** : Tick check box
- **Erase Edge** : Untick Check Box
- **Apply Background Filter** : Tick Check box, Tick option button Remove Background Color White and set value to more.
- **Merge Side of a Duplex scan into single page** : Untick Check Box
- **Detect Blank Page** : Untick Check Box



7. Image Processing : - Clean up Pages

- **Remove Noise** : Untick Check Box
- **Remove Holes** : Untick Check Box

